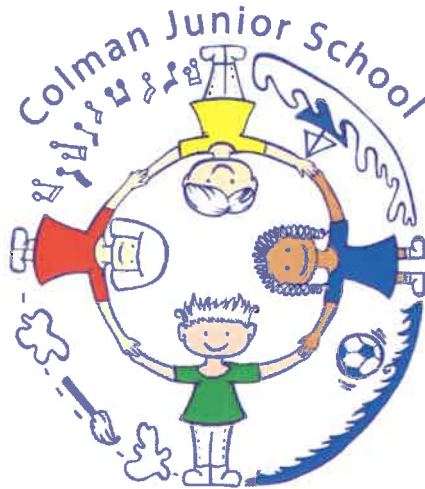


Mrs Julie Sandford  
Headteacher



South Park Avenue  
Norwich NR4 7AU

19<sup>th</sup> July 2018

Dear Parent/Carer

### **Gressenhall Farm and Workhouse and Crucial Crew Trips**

We have arranged two exciting educational visits for Year 6 which link to and extend the children's work in school as follows:-

#### Gressenhall Farm and Workhouse: Friday 14<sup>th</sup> September 2018

We have arranged for a visit to Gressenhall Farm and Workhouse on 14<sup>th</sup> September. This will complement our study of Victorian Britain. The children will take part in a Victorian activity day - an active hands-on experience which will broaden their knowledge and understanding of life for Victorian children. We will take part in a range of character-led living history activities, such as participating in a Victorian school lesson and experiencing life in the workhouse and on the farm. To add to the authenticity of the day we invite your child to dress up as a poor Victorian child and a costume ideas sheet is attached to this letter.

We will travel to and from Gressenhall by coach. Pupils will need a packed lunch and a drink. As some of the activities will be outside they will also need a coat. Those children entitled to a free school meal will be provided with a packed lunch from school. We will return back to school at 4pm please can you indicate on the attached slip how your child will get home.

#### Norwich Crucial Crew Event: Tuesday 18<sup>th</sup> September 2018

Crucial Crew is an interactive safety initiative, organised by Norfolk Fire Service, aimed at Year 6 pupils. It comprises 10-12 theatre-style sets which recreate situations of crime and danger and we are visiting this event on 18<sup>th</sup> September. The children proceed around the sets in groups of 6-10, spending approximately 10 minutes at each scenario. They experience and participate in a range of realistic situations in order to raise their awareness of what they can do to increase their own and others' safety. We will travel to and from the event by coach, returning to school in time for lunch.

The total cost of both trips is £13.50, including coach hire. The visits will take place during normal school hours and therefore, the school is unable to make a charge, but is allowed to ask for voluntary contributions. We do not have funds to meet the cost, so the visits will only go ahead if sufficient voluntary contributions of £13.50 are received. *If your child is eligible for Pupil Premium, then the cost of the trip will be met by the school, please indicate on the reply slip if this is the case.*

Please complete the attached reply slip by Friday 7<sup>th</sup> September 2018 and return to the School Office.

Yours faithfully

Mr Furlong

Miss Harrison

Mrs Garrod

Tel: 01603 508530

www.colmanjunior.norfolk.sch.uk

email: office@colmanjunior.norfolk.sch.uk

**Reply slip for Gressenhall Trip and Crucial Crew**  
(Please return to the School Office by 7<sup>th</sup> September 2018)

Child's name: \_\_\_\_\_

Class: \_\_\_\_\_

**I give permission for my child to take part on 14<sup>th</sup> September to Gressenhall Farm and Workhouse and permission on 18<sup>th</sup> September to attend Norwich Crucial Crew Event.**

- I enclose the requested voluntary contribution of £13.50 by cash/cheque.
- I have already added £13.50 via Pupil Asset, please allocate from my child's account to the trip.
- My child is entitled to Pupil Premium and I understand the cost will be met by the school.
- My child is entitled to a free school meal and requires a packed lunch for the Gressenhall Trip.

**Pupils will return back to school at 4pm on the Gressenhall Trip. Please indicate how your child will get home: -**

- My child is allowed to walk home alone at 4pm.
- My child will be collected at 4pm from school.

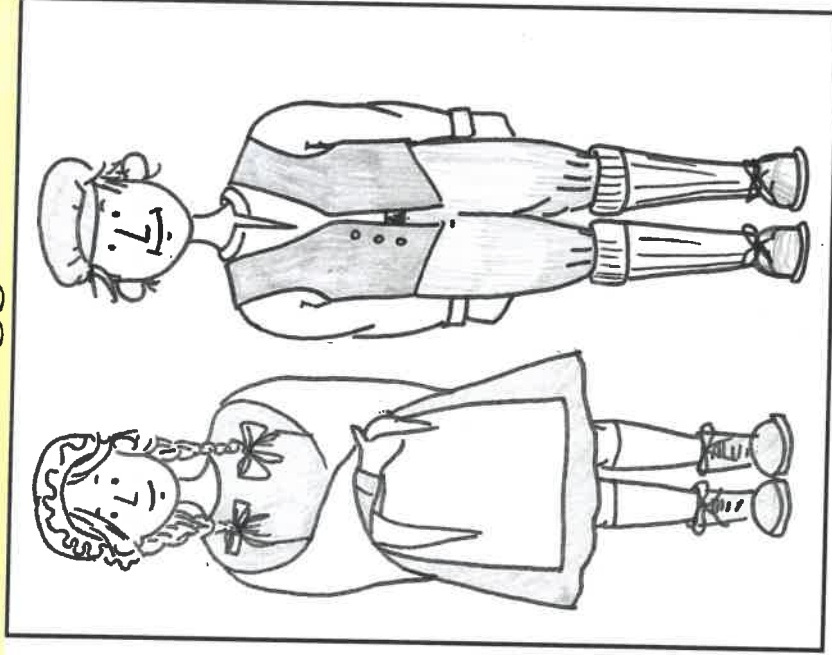
Signed: \_\_\_\_\_ Parent/Carer Date: \_\_\_\_\_

# Victorian costume and lunch suggestions

## Girls

- Bonnet, scarf or straw hat
- Hair worn loose or in plaits
- Hair tied with ribbons
- Plain knee or calf length dress (or a skirt and top)
- Plain white apron
- Shawl or wide scarf drawn over head or shoulders
- Long socks or thick, plain tights
- Stout dark shoes or boots

If the weather is cold please bring a coat with you. Don't worry, it doesn't have to look Victorian!



## Boys

- Flat cap
- Handkerchief or scarf tied at neck
- Old shirt with collar cut off or tucked inside
- Trousers tucked into long socks, grey/black 'school' shorts or cut down old school trousers
- Button up waistcoat
- Long socks
- Stout dark shoes or boots

If the weather is cold please bring a coat with you. Don't worry, it doesn't have to look Victorian!

## Lunch

You might like to consider bringing a Victorian lunch to eat. In a time before supermarkets and fast food, there was no crisps or plastic wrapped chocolates or biscuits! Food could be brought wrapped in a cloth (i.e. tea towel), a basket, brown paper bag or in a tin rather than a plastic lunchbox. Food to include:

- \*Thick sliced cheese sandwich
- \*Bread and jam
- \*Pickled onions
- \*Cooked ham
- \*Boiled egg
- \*Fruit
- \*Gingerbread biscuits
- \*Shortbread
- \*Fruit cake
- \*Jam tart
- \* 'Traditional' lemonade
- \* Ginger beer

*'...there were no school dinners. I took bread and cheese and a bottle of cold tea...'*