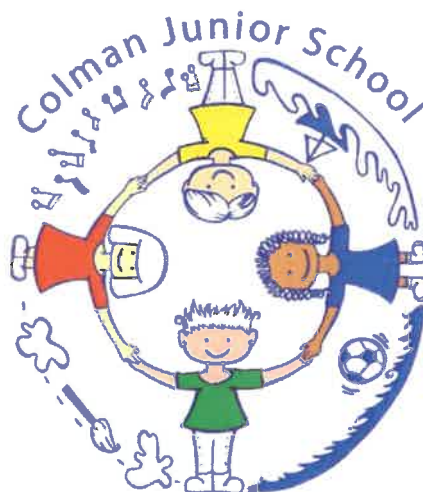


Mrs Julie Sandford
Headteacher



South Park Avenue
Norwich NR4 7AU

19th July 2019

Dear Parent/Carer

Gressenhall Farm and Workhouse and Crucial Crew Trips

We have arranged two exciting educational visits for Year 6 which link to and extend the children's work in school as follows:-

Norwich Crucial Crew Event: Tuesday 17th September 2019

Crucial Crew is an interactive safety initiative, organised by Norfolk Fire Service, aimed at Year 6 pupils. It comprises 10-12 theatre-style sets which recreate situations of crime and danger and we are visiting this event on 17th September. The children proceed around the sets in groups of 6-10, spending approximately 10 minutes at each scenario. They experience and participate in a range of realistic situations in order to raise their awareness of what they can do to increase their own and others' safety. We will travel to and from the event by coach and school minibus, just before lunch time and return to school in time for the end of the school day. Children will need to bring a packed lunch and drink with them, unless they are entitled to free school meals then a lunch will be provided for them. Children will need to wear normal school uniform and have a coat with them.

Gressenhall Farm and Workhouse: Friday 20th September 2019

We have arranged for a visit to Gressenhall Farm and Workhouse on 20th September. This will complement our study of Victorian Britain. The children will take part in a Victorian activity day - an active hands-on experience which will broaden their knowledge and understanding of life for Victorian children. We will take part in a range of character-led living history activities, such as participating in a Victorian school lesson and experiencing life in the workhouse and on the farm. To add to the authenticity of the day we invite your child to dress up as a poor Victorian child and a costume ideas sheet is attached to this letter.

We will travel to and from Gressenhall by coach and school minibus. Pupils will need a packed lunch and a drink, again if your child is eligible for free school meals then a lunch will be provided. As some of the activities will be outside they will also need a coat. We aim to return in time for normal end of day arrangements to apply.

The total cost of both trips is £17.00, including coach hire. The visits will take place during normal school hours and therefore, the school is unable to make a charge, but is allowed to ask for voluntary contributions. We do not have funds to meet the cost, so the visits will only go ahead if sufficient voluntary contributions of £13.50 are received. *If your child is eligible for Pupil Premium, then the cost of the trip will be met by the school, please indicate on the reply slip if this is the case.*

Continued.../

If you are paying by cash/cheque or eligible for pupil premium, please return the attached slip by 7th September. If you are paying by ParentPay then there is no need to return the slip as we will have electronic consent.

Yours faithfully



Mr Furlong



Miss Harrison



Mrs Garrod

Reply slip for Gressenhall Trip and Crucial Crew

Please return if you are paying by cash/cheque or eligible for Pupil Premium. If you are paying via ParentPay then you do not need to return as we will have electronic consent

(Please return to the School Office by 6th September 2019)

Child's name: _____

Class: _____

I give permission for my child to take part on 20th September to Gressenhall Farm and Workhouse and permission on 17th September to attend Norwich Crucial Crew Event.

I enclose the requested voluntary contribution of £17.00 by cash/cheque.

My child is entitled to Pupil Premium and I understand the cost will be met by the school.

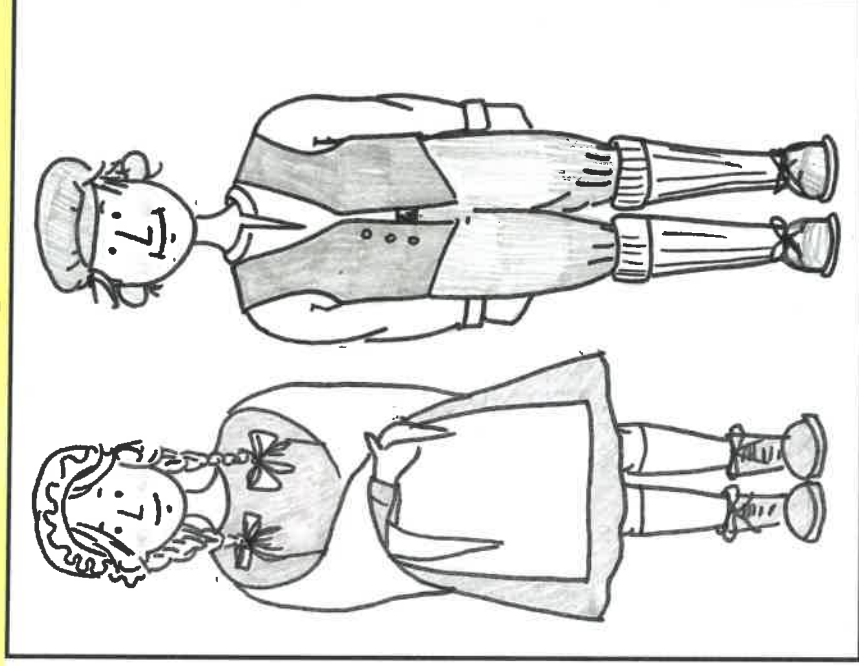
Signed: _____ Parent/Carer Date: _____

Victorian costume and lunch suggestions

Girls

- Bonnet, scarf or straw hat
- Hair worn loose or in plaits
- Hair tied with ribbons
- Plain knee or calf length dress (or a skirt and top)
- Plain white apron
- Shawl or wide scarf drawn over head or shoulders
- Long socks or thick, plain tights
- Stout dark shoes or boots

If the weather is cold please bring a coat with you. Don't worry, it doesn't have to look Victorian!



Boys

- Flat cap
- Handkerchief or scarf tied at neck
- Old shirt with collar cut off or tucked inside
- Trousers tucked into long socks, grey/black 'school' shorts or cut down old school trousers
- Button up waistcoat
- Long socks
- Stout dark shoes or boots

If the weather is cold please bring a coat with you. Don't worry, it doesn't have to look Victorian!

Lunch

You might like to consider bringing a Victorian lunch to eat. In a time before supermarkets and fast food, there was no crisps or plastic wrapped chocolates or biscuits! Food could be brought wrapped in a cloth (i.e. tea towel), a basket, brown paper bag or in a tin rather than a plastic lunchbox. Food to include:

- *Thick sliced cheese sandwich
- *Bread and jam
- *Pickled onions
- *Cooked ham
- *Boiled egg
- *Fruit
- *Gingerbread biscuits
- *Shortbread
- *Fruit cake
- *Jam tart
- * 'Traditional' lemonade
- * Ginger beer

'...there were no school dinners. I took bread and cheese and a bottle of cold tea...'